



## The glulam perfectionists

**Lamel Legno, since 1990.** The company has quickly become an important enterprise and continues to produce high-quality intermediate products thanks to constant technological innovation and the professional skills of all its staff.



# Index

pag 06	The Company
pag 10	Environment and certifications
pag 14	Our advantages
pag 16	Products
pag 18	Window Scantlings
pag 20	Door Scantlings
pag 22	Finger-Jointed Panels
pag 23	Solid edge-glued Panels
pag 24	3-Layer Panels
pag 26	Contacts



# Wood

## The heart of our Company

### Mission

Wood has always been synonymous with high quality of life, and is an essential element for those who want a warm, welcoming, comfortable life filled with well-being. An extraordinary link with tradition that constantly seeks to improve through the development of processes and technology. Absolute values that enrich and enhance the home, with the unique qualities that mankind has exclusively found in wood, since time immemorial.

### Production and raw materials

The success of Lamel Legno is based on technology and efficiency: advanced, highly specialised production lines, equipped with automatic computerised quality control systems, which enable us to create reliable, top-quality products.

Lamel Legno carefully selects each supplier and buys only top-quality raw materials: timber from various European, American and exotic forests, worked with the most advanced cutting, drying and gluing techniques.



### Figures

The company has shown strong growth thanks to our dedication and professionalism. We now work in a complex of over 50000 m<sup>2</sup> (including an indoor space of 12000 m<sup>2</sup>), with 800 m<sup>3</sup> of drying capacity and 2000 m<sup>3</sup> of finished product ready for delivery.

All of this makes Lamel Legno a reliable partner, ready to meet all its customers' needs.

**Lamel Legno**



## Wood, a common good

The choice to work with a renewable asset such as wood is not only a professional mission, but also part of a company's social responsibility. Lamel Legno has perfectly integrated ethical concerns into its strategic business vision: effectively managing the issues of social and environmental impact in its different businesses.



# Environment

## Nature and technology for a product of excellence

Respect for the environment has always been the key for Lamel Legno. We have a true commitment to corporate responsibility that allows the company to operate with pride in the areas of sustainability and environmental protection.

Particular attention is given to energy savings through the implementation of a 430 kWp photovoltaic plant, with an annual reduction in emissions of about 300 tons of CO<sub>2</sub> and the use of biomass as a substitute for conventional fuels.

Lamel Legno is ISO 9001 certified to ensure the maintenance and continuous improvement over time of the quality of its products and services.

Lamel Legno has obtained CATAS product certification, which ensures compliance of the gluing of its products with the requirements defined by official regulations.

Lamel Legno has obtained chain of custody (CoC) certification for the creation of products certified FSC and PEFC, which ensures the provenance of wood from forests managed in accordance with the standards required to protect the environment and civil rights.



These qualities, combined with particular attention to the needs of customers, and to continuous improvement of our products and services enable Lamel Legno to be at the cutting edge of the industry, always ready to meet the needs of its customers.

**Lamel Legno**



## Controlled perfection

Continuous technological innovation, investments in high-precision automation, the high professionalism of our human resources team and our modern production cycles lead to an excellent price-quality ratio for the product.



# Our advantages

## Trained to be the best

### Research and Quality

Continuous research into the quality of products can be considered our main business philosophy "TOTAL QUALITY": a productive activity always aiming to achieve the highest quality for our products. Research that begins with the careful selection of raw materials and continues at each subsequent stage of work on the intermediate product, based on advanced and highly specialised production lines, equipped with control systems for all the critical aspects of wood: humidity, dimensions, quality.

### Professionalism and Support

Flexibility is one of our greatest strengths. Lamel Legno is able to adapt "quickly" to the demands of the market, and to create custom products with supplies of new raw materials and specific programming of each stage of the process.



### Service

Guaranteeing our customers a rapid, reliable and "punctual delivery service" has always been a primary goal in Lamel Legno's philosophy of total quality. Thanks to an efficient system of management and control, the company is able to ensure rapid, punctual delivery.

### Speed and Satisfaction

Continuously seeking customer satisfaction is the prime objective of Lamel Legno: responding to customer needs with the highest priority, conforming to particular technical requirements and providing confirmed delivery times. Lamel Legno hopes to become our customers' partner.





Strength lies in diversity,  
not in similarity

Glulam is undoubtedly wood and has all its advantages, but it is also a new, industrial product, which, through technological processing, overcomes the defects of solid wood.



# Window Scantlings

The glulam profile is composed of two or more lamellas of dried, planed, selected and glued wood. It ensures maximum rigidity combined with high quality and workability. The use of the glulam profile is the ideal technological solution for all wooden doors and windows, and allows the creation of high-quality manufactured items in a short time, with certainty on costs.



## Dimensions

- mm 51x75/86/95/105/115/125/145
- mm 63x75/86/95/105/115/125/145
- mm 72x75/86/95/105/115/125/145
- mm 84x75/86/95/105/115/125/145
- mm 96x75/86/95/105/115/125/145

## Technological characteristics

- Solid external lamellas
- Solid internal lamellas or two staves width-laminated

## Gluing

- UNI EN 204 D4 standard

## Humidity

- 12% +/- 2%

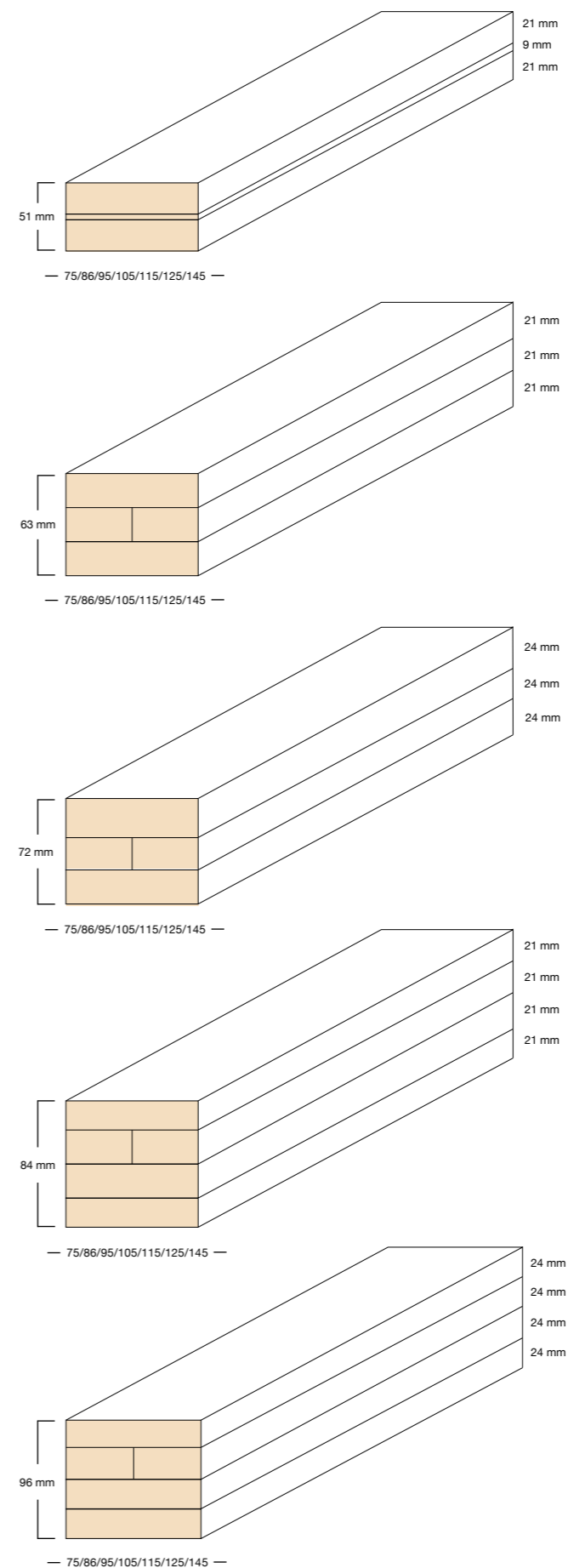
## Finishing

- Planed and clear cutted ends

## On request

- Even small quantities can include made to measure sections

## Sizes:



## Wood species:

American White Oak



American Red Oak



American Ash



Pine



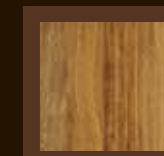
Okumè



Sapelli



Iroko



Larch



**Lamel Legno**

# Door Scantlings

Quality, speed and certainty on costs. Glulam for doors has the following components:

- 3-layer or veneered profile for door frames
- 2-layer profile for frames
- solid edge-glued door panels
- solid wood door mouldings
- 3-layer sandwich panel for monoblock doors to be pantographed



## Solid Wood Door Kit

### 1 Door frame

- long H 2200 mm, short H 750 mm
- 1a) veneered size 45x118 mm A/A external lamellas: 4 mm, internal lamellas in the same wood external stave min. 22 mm
- 1b) laminated size 48x120 mm A/A 3-layer 22+4+22

### 2 Frame profile

- size 44x120 mm A/C 2-layer
- long H 2200 mm, short H 900 mm

### 3 Solid edge-glued door panel

- thickness: 20/27 mm
- length: 1840/1250/600 mm
- width: 650 mm

### e Solid wood S2S door moulding

- size 22x75 mm
- long 2400 mm, short 1200 mm

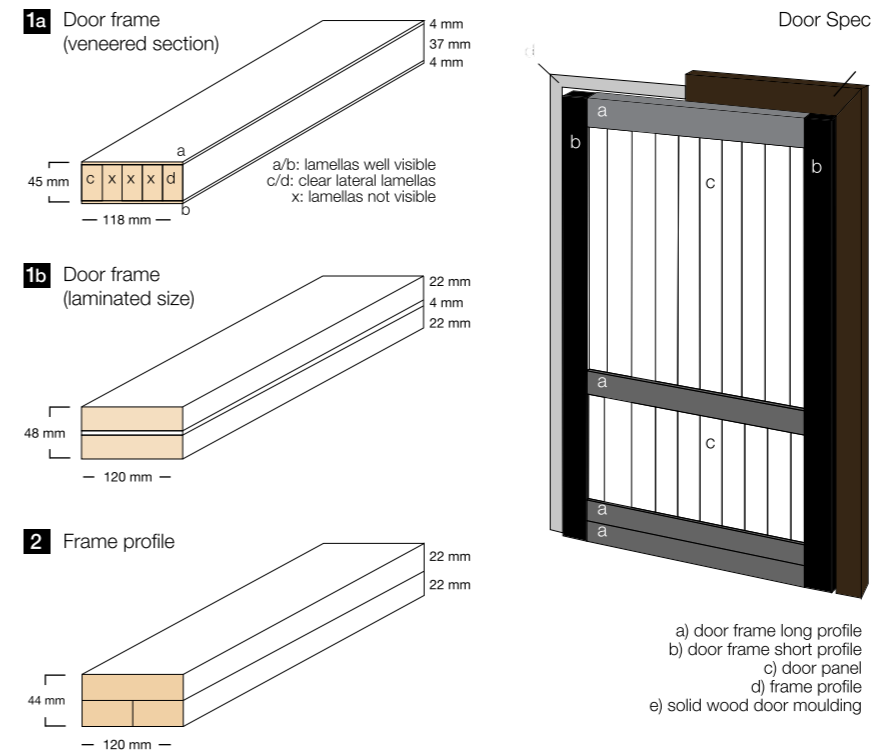
## Sandwich Door

### 4 Sandwich Panel

- thickness: 44 mm
- length: 2150 mm
- width: 640/740/840/940 mm

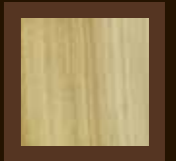
### 5 Solid edge-glued door panel

- stave: 45 mm
- thickness: 12 mm
- length: 2200 mm
- width: 650/750/850/950 mm

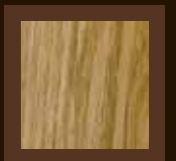


Wood species:

Tulipier



American White Oak



American Ash



American Red Oak



# Finger-Jointed Panel

The FJ panel is made of carefully chosen top-quality wood, with lamellas glued together with finger joints.

This system gives the product a particular aesthetic combined with high stability and strength that make it particularly suitable for the production of flat surfaces for kitchens, furniture, stairs and tables.



## Wood species



### Dimensions

- Thickness: 19/20/26/27/32/40/42/45 mm
- Length: up to 5000 mm
- Width: max. 1220 mm
- Stave: 20/40 mm

### Technological characteristics

- Fingers on the side

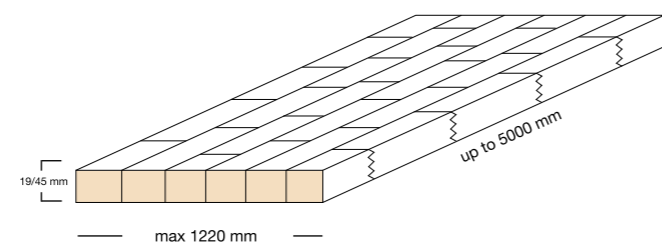
### Gluing

- UNI EN 204 D3 standard

### Humidity

- 8% +/- 2%

Formaldehyde content according to E1 standard



# Solid Edge-glued Panel

The solid edge-glued panel is made of high-quality wood by gluing solid lamellas of fixed or variable width, carefully selected and chosen to give uniformity of coloration.

The solid edge-glued panel is particularly elegant and suitable for the production of furniture and stairs.



## Wood species



### Dimensions

- Thickness: 20-27-32-40-45 mm
- Length: min. 70% 3000-2700-2400-2100 mm, max. 30% 1800-1200 mm
- Width: max 1250 mm
- Stave: random 45-90 mm

### Technological characteristics

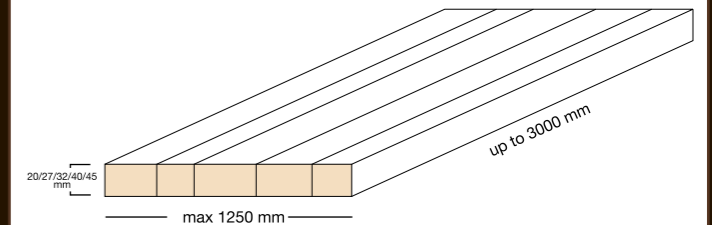
- Glued solid staves

### Gluing

- UNI EN 204 D3 standard

### Humidity

- 8% +/- 2%



# 3-Layer Panel

The 3-layer glulam panel is made from solid lamellas of the finest quality wood, glued and cross-laminated in three layers.

The three-layer structure gives the panel a high mechanical resistance that makes it ideal for use in furniture, stairs, coverings, windows and doors.



## Wood species



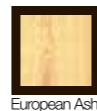
White Beech



Steamed Beech



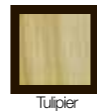
American Ash



European Ash



American White Oak



Tulipier

## Dimensions

- Thickness: 21 mm
- Length: min. 70% 3000-2700-2400-2100 mm, max. 30% 1800-1200 mm
- Width: 1250 mm
- Stave: random 70-110 mm

## Technological characteristics

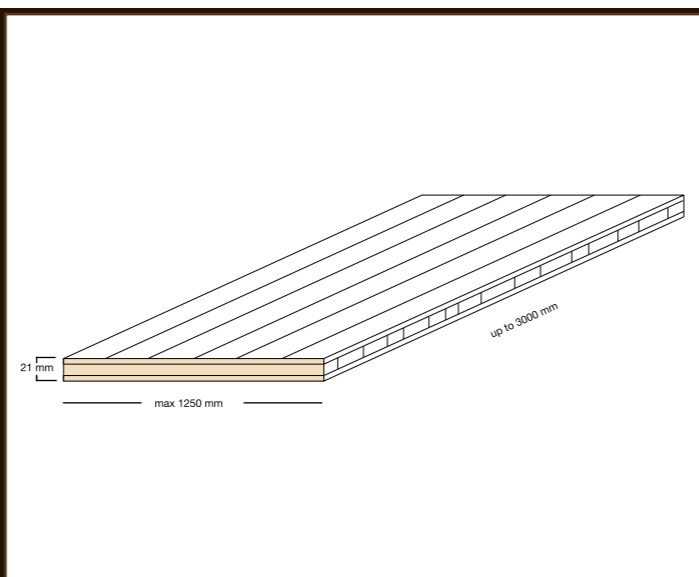
- 7 mm 3-layer panel
- Internal panel with grain perpendicular to outer sides

## Gluing

- UNI EN 204 D3 standard

## Humidity

- 8% +/- 2%



# Contacts



## Lamel Legno srl

Z.I. Tratturello - Loc. Calderara  
86033 Montefalcone nel Sannio (CB)  
ITALY

Ph +39 0874 877752  
+39 0874 877823  
Fax +39 0874 877815  
info@lamellegno.it  
lamellegnosrl@legalmail.it  
www.lamellegno.it





**Lamel Legno**

[www.lamellegno.it](http://www.lamellegno.it)